

DATE : 15 SEPTEMBER 2010

3 LOCKS 2 KEYS INTERLOCK SYSTEM

ORDERING INFORMATION :

MODEL : CL, HANDLING : LH, CONSTRUCTION : STANDARD

DUST COVER : NOT REQUIRED, MOVEMENT : CLOCKWISE 90 DEG.

SPINDLE : 9.5mm SQUARE X 22mm LONG

KEY : STAINLESS STEEL (STANDARD)

CODING : SHOW AS FOLLOWING DIAGRAM

<p>OPERATION : KEY T26 TO OPERATE LOCK T26</p>	<p>OPERATION : KEY T27 TO OPERATE LOCK T27</p>	<p>OPERATION : KEY T28 TO OPERATE LOCK T28</p>
<p>OPERATION : KEY T29 TO OPERATE LOCK T29</p>	<p>OPERATION : KEY T30 TO OPERATE LOCK T30</p>	

DATE : 15 SEPTEMBER 2010

5 LOCKS 3 KEYS INTERLOCK SYSTEM

ORDERING INFORMATION :

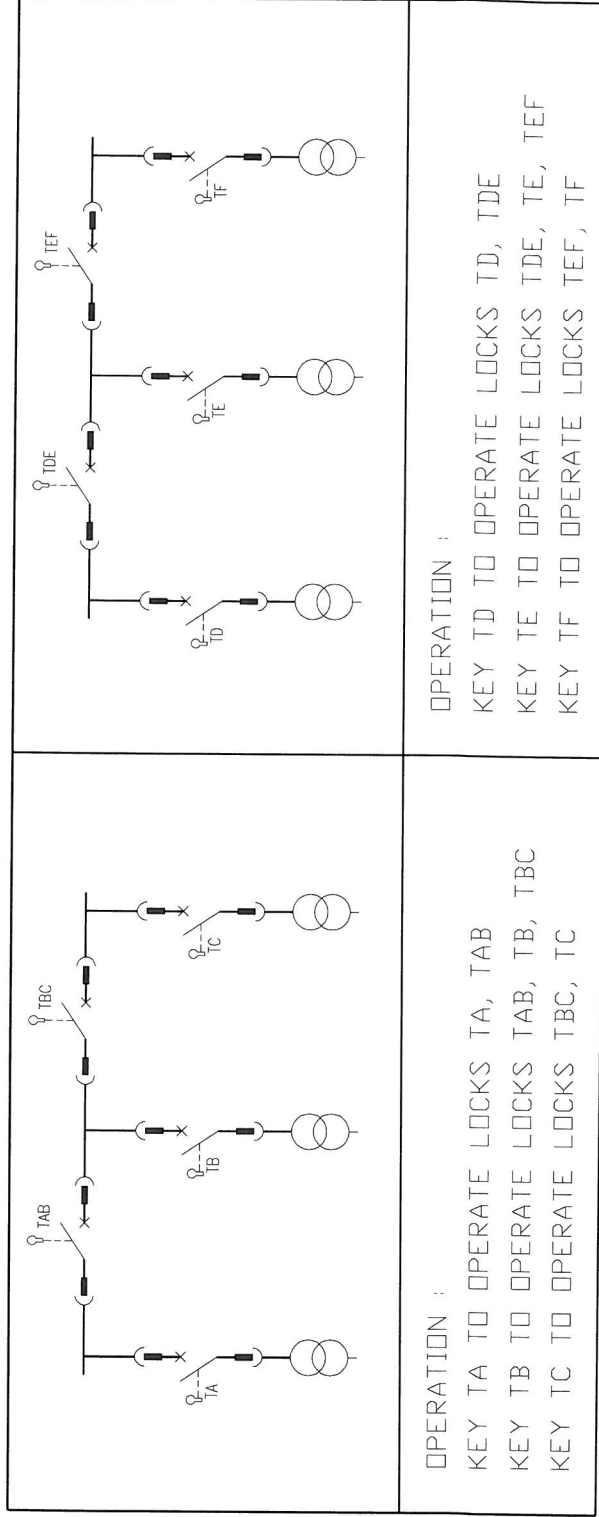
MODEL : CL, HANDLING : LH, CONSTRUCTION : STANDARD

DUST COVER : NOT REQUIRED, MOVEMENT : CLOCKWISE 90 DEG.

SPINDLE : 9.5mm SQUARE X 22mm LONG

KEY : STAINLESS STEEL (STANDARD)

CODING : SHOW AS FOLLOWING DIAGRAM



DATE : 15 SEPTEMBER 2010

7 LOCKS 4 KEYS INTERLOCK SYSTEM

ORDERING INFORMATION :

MODEL : CL, HANDLING : LH, CONSTRUCTION : STANDARD

DUST COVER : NOT REQUIRED, MOVEMENT : CLOCKWISE 90 DEG.

SPINDLE : 9.5mm SQUARE X 22mm LONG

KEY : STAINLESS STEEL (STANDARD)

CODING : SHOW AS FOLLOWING DIAGRAM

